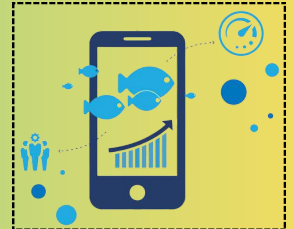


ADOPTION OF DIGITAL TECHNOLOGY

USED REGULARLY [1-3]

1 Production Management Software

More than 1/2 used regularly



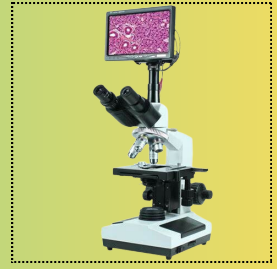
2

2 GPS Equipment/Mapping Tools

About 1/3 used regularly

3 Digital Microscope

About 1/3 used regularly



4

4 Feeding Monitoring Equipment

About 1/3 used often



5

5 Automated Fish Sorting Equipment

About 1/3 used often



6

6 Sonar/Benthic Monitoring Equipment

About 1/3 used often



7

7 Autonomous Aerial Drones

More than 1/2 used rarely



8

8 Digital Medical Devices

More than 1/2 used rarely



9

9 Environmental Impact Prediction Software

More than 1/2 used rarely



10

10 Water Quality Sensor

More than 1/2 unaware about it



11

11 Payroll Systems

About 1/2 unaware about it



12

12 Remote Monitoring Systems

About 1/2 unaware about it



USED OFTEN [4-6]

RARELY USED [7-9]

UNAWARE OF TECHNOLOGIES [10-12]